

STANDARD ARRIVAL CHART  
INSTRUMENT (STAR) - ICAO

TRANSITION ALT 14 000  
TRANSITION LVL FL 140

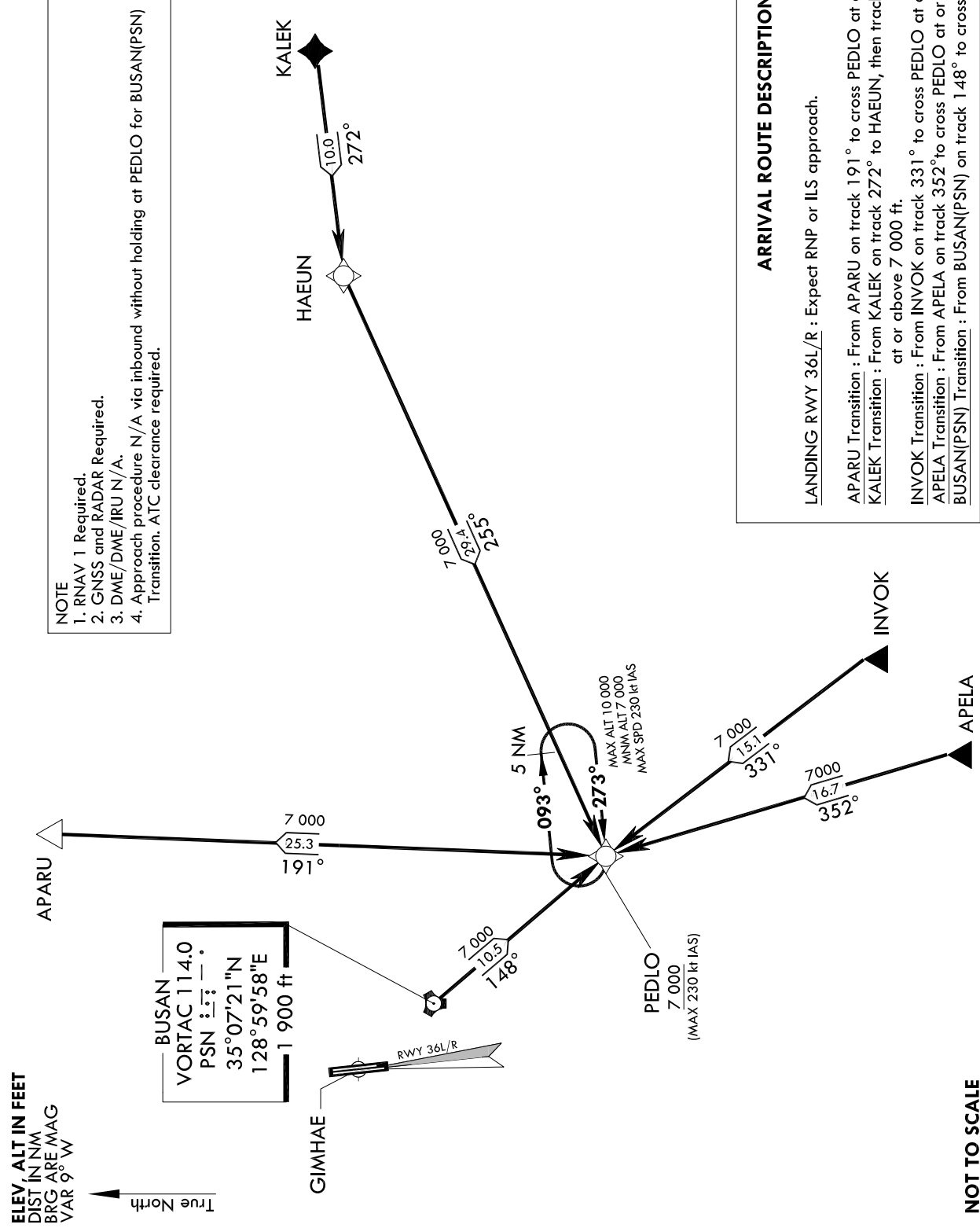
GIMHAE APP	125.5
	364.0
GIMHAE TWR	118.1 118.45
	233.3 236.6

BUSAN/Gimhae Intl(RKPK)  
RWY 36L/R  
RNAV(GNSS) PEDLO 1

Note : Arrival under U.S. TERPS.

5200  
MSA 25 NM  
GIMHAE ARP

NOTE  
1. RNAV 1 Required.  
2. GNSS and RADAR Required.  
3. DME/DME/IRU N/A.  
4. Approach procedure N/A via inbound without holding at PEDLO for BUSAN(PSN) Transition. ATC clearance required.



**ARRIVAL ROUTE DESCRIPTION**

LANDING RWY 36L/R : Expect RNP or ILS approach.

APARU Transition : From APARU on track 191° to cross PEDLO at or above 7 000 ft.  
KALEK Transition : From KALEK on track 272° to HAEUN, then track 255° to cross PEDLO at or above 7 000 ft.  
INVOK Transition : From INVOK on track 331° to cross PEDLO at or above 7 000 ft.  
APELA Transition : From APELA on track 352° to cross PEDLO at or above 7 000 ft.  
BUSAN(PSN) Transition : From BUSAN(PSN) on track 148° to cross PEDLO at or above 7 000 ft.

ELEV, ALT IN FEET  
DIST IN NM  
BRG ARE MAG  
VAR 9° W

True North

NOT TO SCALE

Change : Information of MAG VAR(7° W → 9° W) and standard instrument arrival procedure for RWY 36L/R.

**BUSAN/Gimhae INTL(RKPK)  
RWY 36L/R  
RNAV(GNSS) PEDLO 1**

**AERONAUTICAL DATA TABULATION**

**Standard Instrument Arrival Procedure Coding Tables**

RNAV PEDLO 1 - APARU Transition

Serial Number	Path Descriptor	Waypoint Identifier	Fly-over	Course/Track °M(°T)	Distance (NM)	Turn direction	Altitude (ft)	Speed (kt)	Coordinates	VPA/TCH	Navigation specification	Remarks
001	TF	APARU	-	-	-	-	-	-	35°24'42.1"N 129°09'32.1"E	-	RNAV 1	-
002	TF	PEDLO	-	190.90(182.38)	25.30	-	+7 000	-230	34°59'23.1"N 129°08'15.3"E	-	RNAV 1	-

RNAV PEDLO 1 - KALEK Transition

Serial Number	Path Descriptor	Waypoint Identifier	Fly-over	Course/Track °M(°T)	Distance (NM)	Turn direction	Altitude (ft)	Speed (kt)	Coordinates	VPA/TCH	Navigation specification	Remarks
001	TF	KALEK	-	-	-	-	-	-	35°12'32.0"N 129°53'05.0"E	-	RNAV 1	-
002	TF	HAUIN	-	272.06(263.54)	10.00	-	-	-	35°11'23.8"N 129°40'57.4"E	-	RNAV 1	-
003	TF	PEDLO	-	254.60(246.08)	29.39	-	+7 000	-230	34°59'23.1"N 129°08'15.3"E	-	RNAV 1	-

RNAV PEDLO 1 - INVOK Transition

Serial Number	Path Descriptor	Waypoint Identifier	Fly-over	Course/Track °M(°T)	Distance (NM)	Turn direction	Altitude (ft)	Speed (kt)	Coordinates	VPA/TCH	Navigation specification	Remarks
001	TF	INVOK	-	-	-	-	-	-	34°47'19.0"N 129°19'23.0"E	-	RNAV 1	-
002	TF	PEDLO	-	331.35(322.83)	15.13	-	+7 000	-230	34°59'23.1"N 129°08'15.3"E	-	RNAV 1	-

RNAV PEDLO 1 - APELA Transition

Serial Number	Path Descriptor	Waypoint Identifier	Fly-over	Course/Track °M(°T)	Distance (NM)	Turn direction	Altitude (ft)	Speed (kt)	Coordinates	VPA/TCH	Navigation specification	Remarks
001	TF	APELA	-	-	-	-	-	-	34°43'23.0"N 129°14'00.0"E	-	RNAV 1	-
002	TF	PEDLO	-	352.06(343.54)	16.66	-	+7 000	-230	34°59'23.1"N 129°08'15.3"E	-	RNAV 1	-

RNAV PEDLO 1 - BUSAN(PSN) Transition

Serial Number	Path Descriptor	Waypoint Identifier	Fly-over	Course/Track °M(°T)	Distance (NM)	Turn direction	Altitude (ft)	Speed (kt)	Coordinates	VPA/TCH	Navigation specification	Remarks
001	TF	BUSAN(PSN)	-	-	-	-	-	-	35°07'21.5"N 128°59'58.5"E	-	RNAV 1	-
002	TF	PEDLO	-	147.98(139.46)	10.47	-	+7 000	-230	34°59'23.1"N 129°08'15.3"E	-	RNAV 1	-

HOLDING PROCEDURE

Holding Identification	Path Descriptor	Waypoint Identifier	Fly-over	Course/Track °M(°T)	Distance (NM)	Turn direction	Altitude (ft)	Speed (kt)	Coordinates	VPA/TCH	Navigation specification	Remarks
RNAV PEDLO 1	HM	PEDLO	-	272.75(264.23)	5	R	-10 000 +7 000	-230	34°59'23.1"N 129°08'15.3"E	-	-	-

Change : Information of standard instrument arrival procedure for RWY 36L/R.

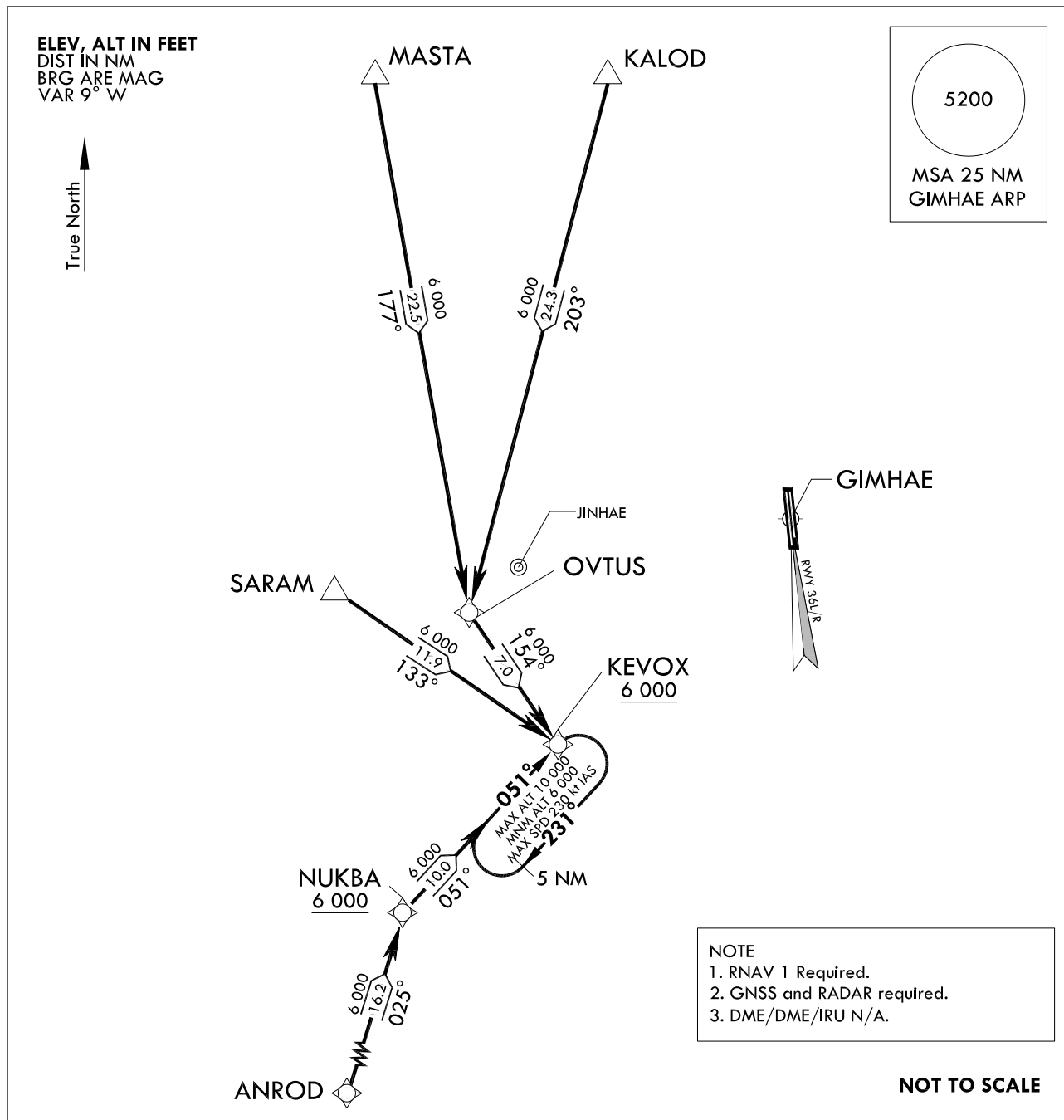
STANDARD ARRIVAL CHART  
INSTRUMENT (STAR) - ICAO

TRANSITION ALT 14 000  
TRANSITION LVL FL 140

GIMHAE APP 125.5  
364.0  
GIMHAE TWR 118.1 118.45  
233.3 236.6

BUSAN/Gimhae Intl(RKPK)  
RWY 36L/R  
RNAV(GNSS) KEVOX 3

Note : Arrival under U.S. TERPS.



**ARRIVAL ROUTE DESCRIPTION**

KEVOX 3 ARRIVAL

LANDING RWY 36L/R : Expect RNP or ILS approach.

MASTA Transition : From MASTA on track 177° to OVTUS, then track 154° to cross KEVOX at or above 6 000 ft.

KALOD Transition : From KALOD on track 203° to OVTUS, then track 154° to cross KEVOX at or above 6 000 ft.

SARAM Transition : From SARAM on track 133° to cross KEVOX at or above 6 000 ft.

ANROD Transition : From ANROD on track 025° to NUKBA, then track 051° to cross KEVOX at or above 6 000 ft.

Change : Information of MAG VAR(7° W → 9° W) and standard instrument arrival procedure for RWY 36L/R.

BUSAN/Gimhae INTL(RKPK)  
RWY 36L/R  
RNAV(GNSS) KEVOX 3

AERONAUTICAL DATA TABULATION

Standard Instrument Arrival Procedure Coding Tables

RNAV KEVOX 3 - MASTA Transition

Serial Number	Path Descriptor	Waypoint Identifier	Fly-over	Course/Track °M(°T)	Distance (NM)	Turn direction	Altitude (ft)	Speed (kt)	Coordinates	VPA/TCH	Navigation specification	Remarks
001	TF	MASTA	-	-	-	-	-	-	35°28'47.0"N 128°33'40.0"E	-	RNAV 1	-
002	TF	OVTUS	-	177.31(168.79)	22.50	-	-	-	35°06'40.3"N 128°39'00.0"E	-	RNAV 1	-
003	TF	KEVOX	-	154.39(145.87)	7.01	-	+6 000	-	35°00'51.7"N 128°43'47.2"E	-	RNAV 1	-

RNAV KEVOX 3 - KALOD Transition

Serial Number	Path Descriptor	Waypoint Identifier	Fly-over	Course/Track °M(°T)	Distance (NM)	Turn direction	Altitude (ft)	Speed (kt)	Coordinates	VPA/TCH	Navigation specification	Remarks
001	TF	KALOD	-	-	-	-	-	-	35°30'12.1"N 128°46'26.5"E	-	RNAV 1	-
002	TF	OVTUS	-	203.09(194.57)	24.27	-	-	-	35°06'40.3"N 128°39'00.0"E	-	RNAV 1	-
003	TF	KEVOX	-	154.39(145.87)	7.01	-	+6 000	-	35°00'51.7"N 128°43'47.2"E	-	RNAV 1	-

RNAV KEVOX 3 - SARAM Transition

Serial Number	Path Descriptor	Waypoint Identifier	Fly-over	Course/Track °M(°T)	Distance (NM)	Turn direction	Altitude (ft)	Speed (kt)	Coordinates	VPA/TCH	Navigation specification	Remarks
001	TF	SARAM	-	-	-	-	-	-	35°07'36.3"N 128°31'46.7"E	-	RNAV 1	-
002	TF	KEVOX	-	132.79(124.27)	11.94	-	+6 000	-	35°00'51.7"N 128°43'47.2"E	-	RNAV 1	-

RNAV KEVOX 3 - ANROD Transition

Serial Number	Path Descriptor	Waypoint Identifier	Fly-over	Course/Track °M(°T)	Distance (NM)	Turn direction	Altitude (ft)	Speed (kt)	Coordinates	VPA/TCH	Navigation specification	Remarks
001	TF	ANROD	-	-	-	-	-	-	34°37'57.66"N 128°29'51.73"E	-	RNAV 1	-
002	TF	NUKBA	-	025.44(016.92)	16.18	-	+6 000	-	34°53'27.57"N 128°35'35.03"E	-	RNAV 1	-
003	TF	KEVOX	-	050.86(042.34)	10	-	+6 000	-	35°00'51.7"N 128°43'47.2"E	-	RNAV 1	-

HOLDING PROCEDURE

Holding Identification	Path Descriptor	Waypoint Identifier	Fly-over	Course/Track °M(°T)	Distance (NM)	Turn direction	Altitude (ft)	Speed (kt)	Coordinates	VPA/TCH	Navigation specification	Remarks
RNAV KEVOX 3	HM	KEVOX	-	051.05(042.53)	5	R	-10 000 +6 000	-230	35°00'51.7"N 128°43'47.2"E	-	-	-

Change : Information of standard instrument arrival procedure for RWY 36L/R.

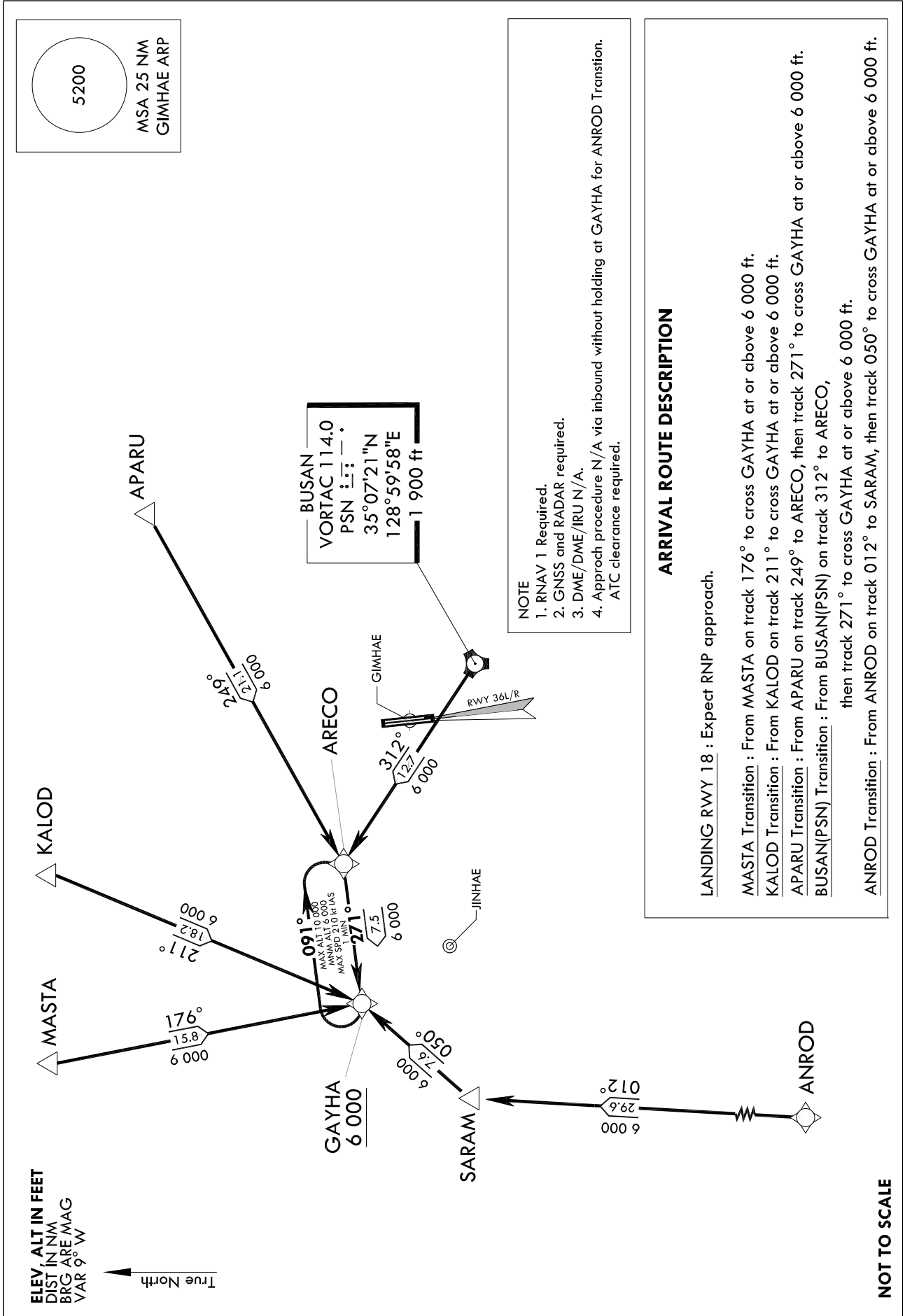
STANDARD ARRIVAL CHART  
INSTRUMENT (STAR) - ICAO

TRANSITION ALT 14 000  
TRANSITION LVL FL 140

GIMHAE APP	125.5
	364.0
GIMHAE TWR	118.1 118.45
	233.3 236.6

BUSAN/Gimhae Intl(RKPK)  
RWY 18L/R  
RNAV(GNSS) GAYHA 3

Note : Arrival under U.S. TERPS.



Change : Information of MAG VAR(7° W → 9° W) and standard instrument arrival procedure for RWY 18L/R.

**BUSAN/Gimhae INTL(RKPK)  
RWY 18L/R  
RNAV(GNSS) GAYHA 3**

**AERONAUTICAL DATA TABULATION**

**Standard Instrument Arrival Procedure Coding Tables**

RNAV GAYHA 3 - MASTA Transition

Serial Number	Path Descriptor	Waypoint Identifier	Fly-over	Course/Track °M(°T)	Distance (NM)	Turn direction	Altitude (ft)	Speed (kt)	Coordinates	VPA/ TCH	Navigation specification	Remarks
001	TF	MASTA	-	-	-	-	-	-	35°28'47.0"N 128°33'40.0"E	-	RNAV 1	-
002	TF	GAYHA	-	175.80(167.28)	15.77	-	+6 000	-	35°13'22.4"N 128°37'54.4"E	-	RNAV 1	-

RNAV GAYHA 3 - KALOD Transition

Serial Number	Path Descriptor	Waypoint Identifier	Fly-over	Course/Track °M(°T)	Distance (NM)	Turn direction	Altitude (ft)	Speed (kt)	Coordinates	VPA/ TCH	Navigation specification	Remarks
001	TF	KALOD	-	-	-	-	-	-	35°30'12.1"N 128°46'26.5"E	-	RNAV 1	-
002	TF	GAYHA	-	211.13(202.61)	18.19	-	+6 000	-	35°13'22.4"N 128°37'54.4"E	-	RNAV 1	-

RNAV GAYHA 3 - APARU Transition

Serial Number	Path Descriptor	Waypoint Identifier	Fly-over	Course/Track °M(°T)	Distance (NM)	Turn direction	Altitude (ft)	Speed (kt)	Coordinates	VPA/ TCH	Navigation specification	Remarks
001	TF	APARU	-	-	-	-	-	-	35°24'42.1"N 129°09'32.1"E	-	RNAV 1	-
002	TF	ARECO	-	249.42(240.90)	21.14	-	-	-	35°14'22.1"N 128°46'59.1"E	-	RNAV 1	-
003	TF	GAYHA	-	270.96(262.44)	7.50	-	+6 000	-	35°13'22.4"N 128°37'54.4"E	-	RNAV 1	-

RNAV GAYHA 3 - BUSAN(PNS) Transition

Serial Number	Path Descriptor	Waypoint Identifier	Fly-over	Course/Track °M(°T)	Distance (NM)	Turn direction	Altitude (ft)	Speed (kt)	Coordinates	VPA/ TCH	Navigation specification	Remarks
001	TF	BUSAN(PNS)	-	-	-	-	-	-	35°07'21.5"N 128°59'58.5"E	-	RNAV 1	-
002	TF	ARECO	-	311.90(303.38)	12.74	-	-	-	35°14'22.1"N 128°46'59.1"E	-	RNAV 1	-
003	TF	GAYHA	-	270.96(262.44)	7.50	-	+6 000	-	35°13'22.4"N 128°37'54.4"E	-	RNAV 1	-

RNAV GAYHA 3 - ANROD Transition

Serial Number	Path Descriptor	Waypoint Identifier	Fly-over	Course/Track °M(°T)	Distance (NM)	Turn direction	Altitude (ft)	Speed (kt)	Coordinates	VPA/ TCH	Navigation specification	Remarks
001	TF	ANROD	-	-	-	-	-	-	34°37'57.6"N 128°29'51.7"E	-	RNAV 1	-
002	TF	SARAM	-	011.56(003.04)	29.64	-	-	-	35°07'36.3"N 128°31'46.7"E	-	RNAV 1	-
003	TF	GAYHA	-	049.59(041.07)	7.64	-	+6 000	-	35°13'22.4"N 128°37'54.4"E	-	RNAV 1	-

HOLDING PROCEDURE

Holding Identification	Path Descriptor	Waypoint Identifier	Fly-over	Course/Track °M(°T)	Time (min)	Turn direction	Altitude (ft)	Speed (kt)	Coordinates	VPA/ TCH	Navigation specification	Remarks
RNAV GAYHA 3	HM	GAYHA	-	271.05(262.53)	1	R	-10 000 +6 000	-210	35°13'22.4"N 128°37'54.4"E	-	-	-

Change : Information of standard instrument arrival procedure for RWY 18L/R.